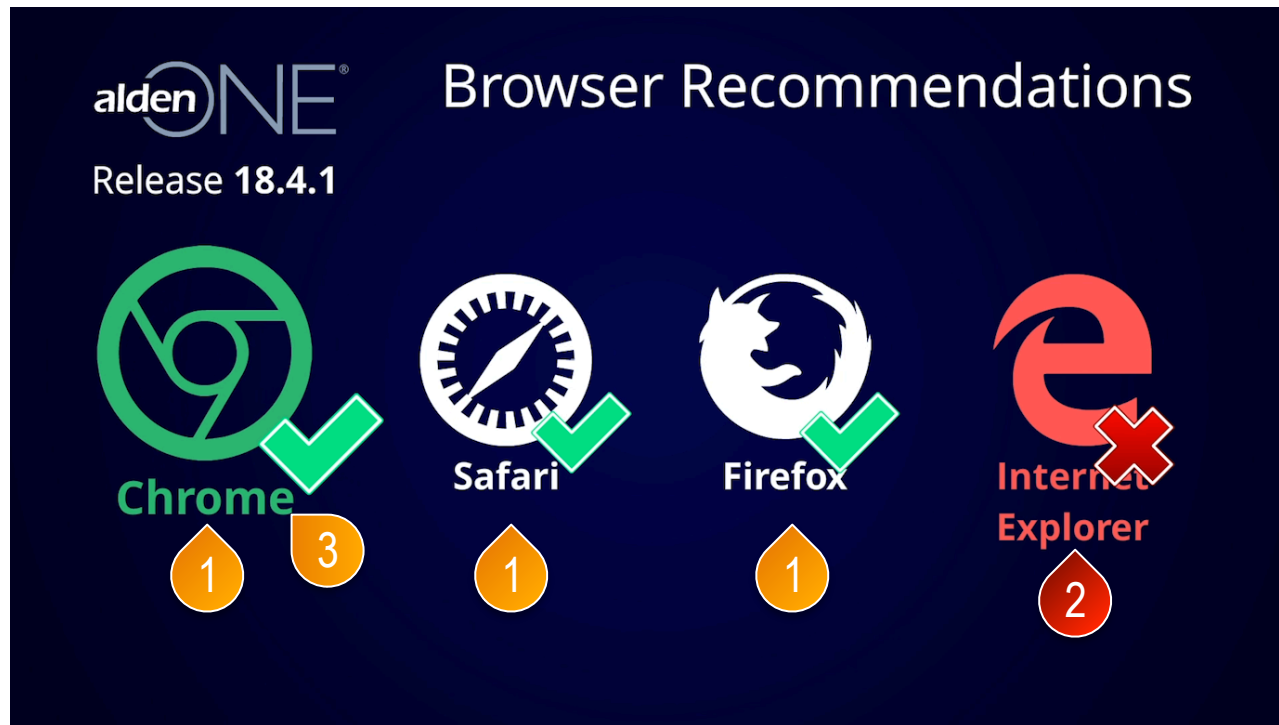


alden ONE Using a Browser with Alden One



The graphic features the Alden ONE logo and 'Release 18.4.1' in the top left. The title 'Browser Recommendations' is centered at the top. Below the title, four browser logos are displayed in a row: Chrome (green), Safari (white), Firefox (white), and Internet Explorer (red). Each logo is accompanied by a green checkmark or a red 'X' and a yellow teardrop icon containing a number. Chrome has a checkmark and two teardrop icons with numbers 1 and 3. Safari has a checkmark and one teardrop icon with number 1. Firefox has a checkmark and one teardrop icon with number 1. Internet Explorer has a red 'X' and one teardrop icon with number 2.

alden ONE[®]
Release 18.4.1

Browser Recommendations

Chrome ✓
1 3

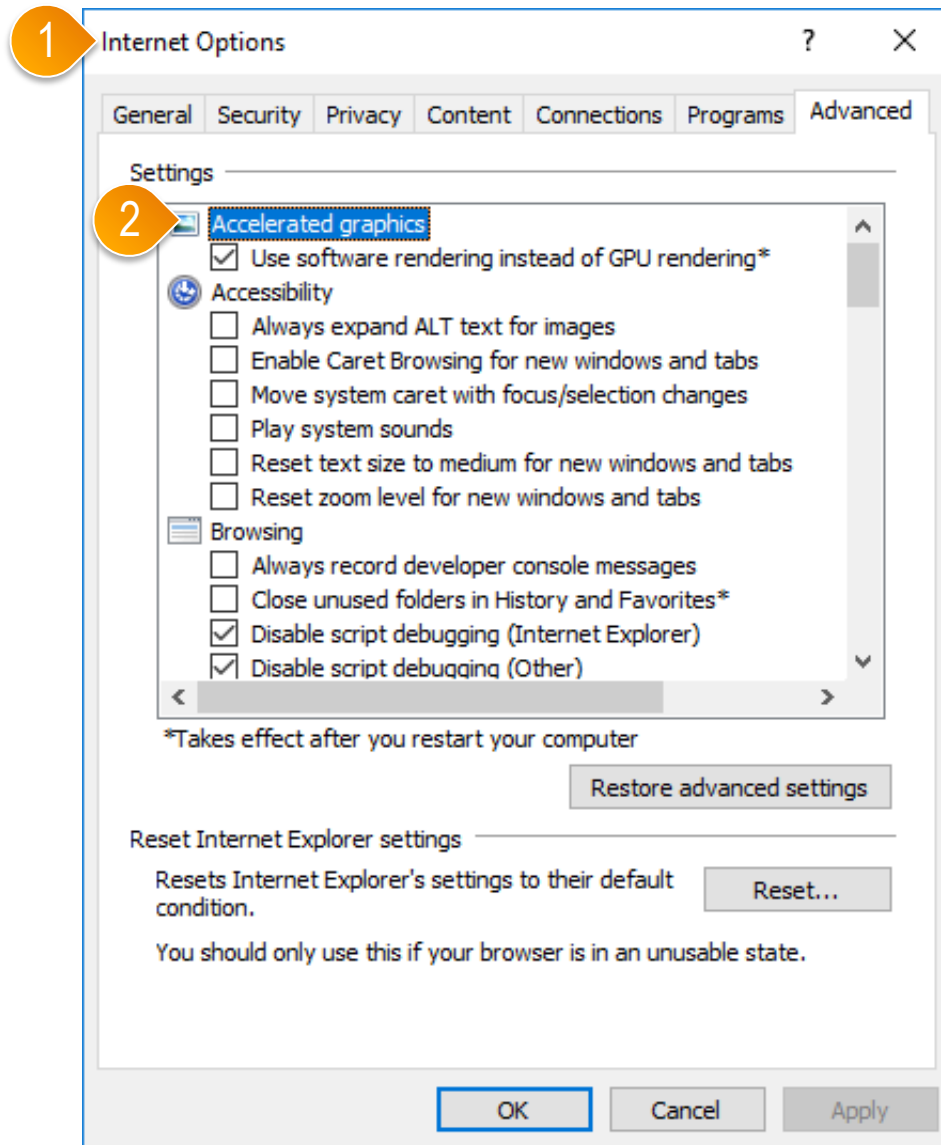
Safari ✓
1

Firefox ✓
1

Internet Explorer ✗
2

page walkthrough

- ① Alden One runs best on an up-to-date browser. We suggest using Chrome, Safari, or Firefox.
- ② We no longer recommend using Internet Explorer because IE has known speed issues that are not being fixed as IE is no longer supported by Microsoft. If you are forced to use Internet Explorer by your organization, see the next page for a recommendation that should help with some known issues.
- ③ We recommend using Google Chrome.



page walkthrough

- ① If Internet Explorer is your only available choice for browsers, go to your Internet Options in IE.
- ② Go to "Accelerated Graphics" and make sure the box is checked for "Use software rendering instead of GPU rendering."